

HDL[®] | buspro



Blind CONTROLLER

MVSM45B.12

www.hdlautomation.com



Product Description

The MVSM45B.12 is a tubular blind controller which has been designed to automate all common roller blinds. Using a HDL Buspro control interface, the tubular motor can open, close, or open/close a blind to a set percentage.



Ultra-quiet
Operation



Customized
shading percentages



High Torque
& Large Load



Accurate
Operational Distance



Convenient
Wiring



Customized shading percentages



High Torque & Large Load



Accurate Operational Distance



Convenient Wiring

Ultra-quiet Operation

Operating at a mere 42dB the blind controller is whisper quiet, this allows seamless integration into any environment.



Blind Controller



Customized Shading Percentages

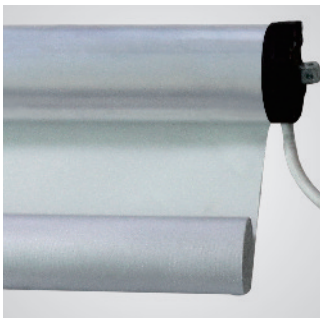
With percentage control a user is able to specify exactly how much they want their blinds opened. These percentages can also be activated automatically by scenes, or sensors, to create an optimized environment.



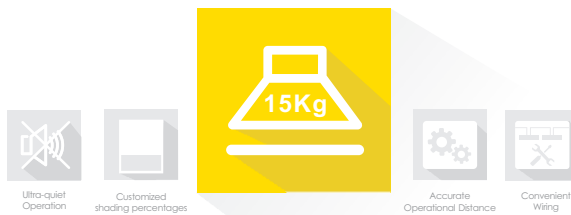
Blind Controller



Drum Diameter 55mm



Supporting Capacity 15kg



High Torque & Large Load

With a motor capable of outputting 10Nm of torque, the blind controller can raise and lower a load of 15kg. A tube diameter of 55mm allows multiple fabric types to be used, and helps to increase operational effectivity and reliability.



Ultra-quiet
Operation



Customized
shading percentages



High Torque
& Large Load



Convenient
Wiring

Accurate Operational Distance

To ensure a long service life a limiter has been installed that prevents the motor from over retracting, or over extending. The blind can also be programmed with the exact distance it must travel, so wear is minimized and energy is saved.

If the blind experiences a power outage while operating, it will immediately stop, and its position will be recorded. When the power is reconnected, the module can calculate the remaining distance it needs to travel to achieve its last command.



Blind Controller





Ultra-quiet
Operation



Customized
shading percentages



High Torque
& Large Load



Accurate
Operational Distance



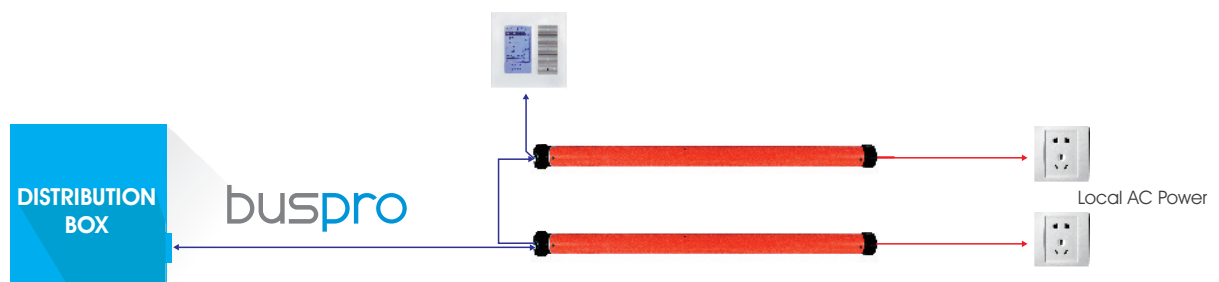
Convenient Wiring

Thanks to the innovative Buspro interface, installing blind controllers no longer requires extensive rewiring, or curtain control modules.

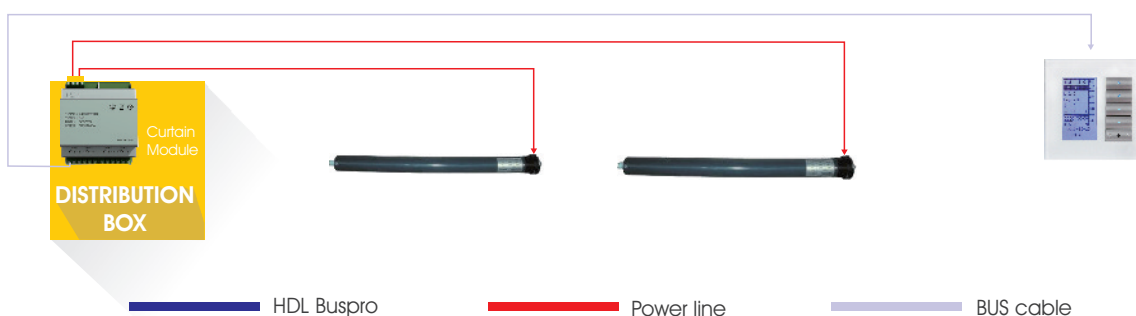
Making use of the unique parallel wiring system, blinds can be directly connected to each other with only the first blind in the chain being connected to the distribution box.

This dramatically speeds up the installation time, and significantly reduces installation costs.

HDL System



Conventional System



HDL[®] | buspro



@HDL Automation

To find out more, please visit www.hdlautomation.com

